

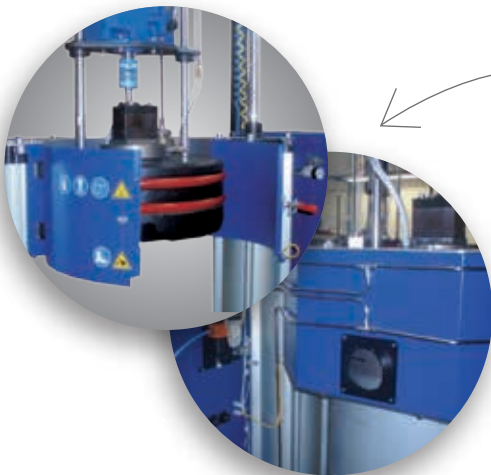
## EDRUM SERIES

### 200 L Drum Unloaders

Designed for the application of any type of adhesive delivered in 200-liter drums, the EDrum Series Unloaders are extremely versatile and include several, customizable options that adapt to each user's specific requirements.

#### Features:

- Safer working environment with optional platen protection system and vent hood.
- Reduced downtime related to drum changes with new drum fastening system.
- Customizable to specific user needs.
- Integrated grammage control.
- Teflon® encapsulated seals.



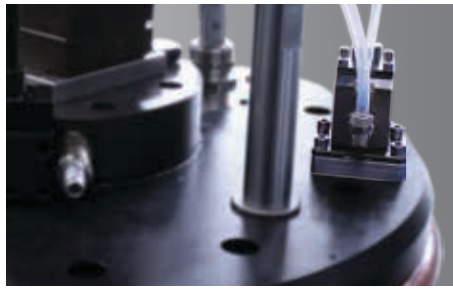
**Optional Safety Features** include a vent hood for easy connection with ventilation tube, as well as a platen protection system to shield operator from burns and entrapments.



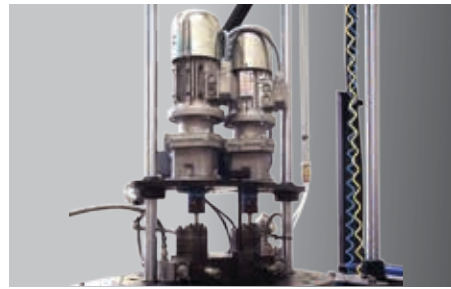
Optional drum clamp guarantees safe operation when working with fiber drums.



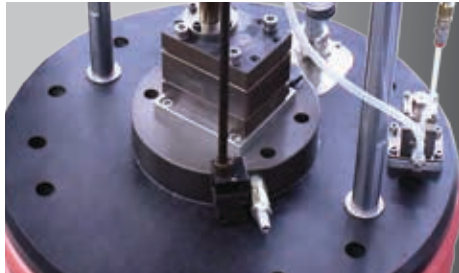
**Continuous operation.** On multiple EDrum installations, an optional level sensor controls the adhesive level on each unloader to facilitate staggered drum changes, which prevents the possibility of all drums being empty at the same time.



EDrum Series includes an automatic blow-off valve.



Dual pump in option.



Built-in pressure relief valve adjusts adhesive output pressure. Optional pneumatic pressure relief valve is available.

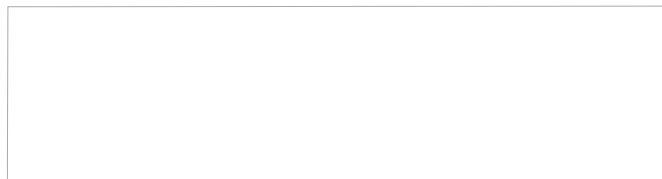


Finned or flat platens better adapt to various adhesive types. All platens are Teflon® coated and include cast-in heaters.

## Technical Specifications

Characteristics	EDrum Series	
	200L flat platen	200L finned platen
System	200L flat platen	200L finned platen
Drum Capacity (L)	200	200
Max. Melting Capacity (Kg/h)	60	130
Max. Pumping Rate (Kg/h)	180	180
Max. Number of Pumps	2	2
Working Temperature	30 - 240 °C	
Max. Working Viscosity (cps)	100000 cps	
Max. Working Pressure (bar)	100 bar	
Electrical Consumption (Kw)	24, 0 Kw	

Max. Channel Power	6 Output Electronic Board			8 Output Electronic Board			
	Channel 1 / Channel 2	Channel 3 / Channel 4	Channel 5 / Channel 6	Channel 1 / Channel 2	Channel 3 / Channel 4	Channel 5 / Channel 6	Channel 7 / Channel 8
Per channel (hose and gun)	1800W	1450W	1450W	1800W	1450W	4600W	4600W



For more information, visit [valcomelton.com](http://valcomelton.com) or contact your local Valco Melton representative.

World Headquarters: USA, Cincinnati, Ohio (Corporate Offices) • Tel:+1.513.874.6550 • Fax: +1.513.874.3612

Europe Headquarters: Spain, Navarra • Tel:+34.948.321.580 • Fax:+34.948.326.584

Asia Headquarters: China, Xiamen, Fujian • Tel:+86.592.591.7854 • Fax:+86.592.591.7834

[inquiry@valcomelton.com](mailto:inquiry@valcomelton.com) • Serving over 76 Countries Worldwide • [valcomelton.com](http://valcomelton.com)